

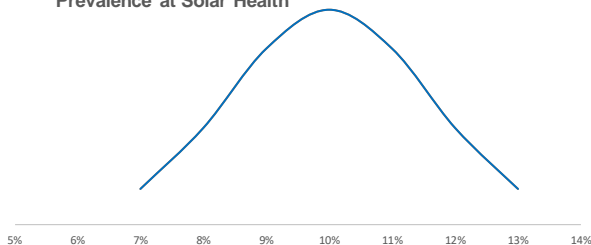
Quality Improvement Basics

Data Analysis Example

0

Describing Data: Summary Stats

Distribution of Monthly Cancer Prevalence at Solar Health



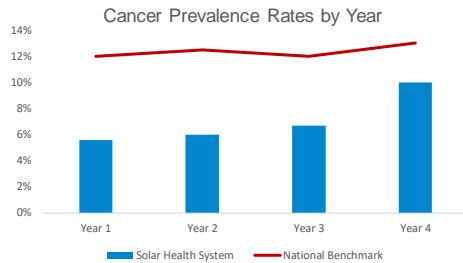
- **Mean:** 10% was the average cancer prevalence rate
- **Median*:** 9% was the middle value for cancer prevalence rate
- **Mode:** 9% was the most frequently reported cancer prevalence rate
- **Range:** [7%,13%] - Rates ranged from the lowest at 7% up to the highest at 13%

*The median will usually approximate the mean unless you have significant outliers or an abnormal distribution.

Solar Health System – Current Year	
Month	Cancer Prevalence Rate
Jan	10%
Feb	11%
Mar	8%
Apr	12%
May	9%
June	9%
July	8%
Aug	9%
Sep	11%
Oct	13%
Nov	7%
Dec	9%

1

Diagnostic Analysis: Identifying Trends and Anomalies



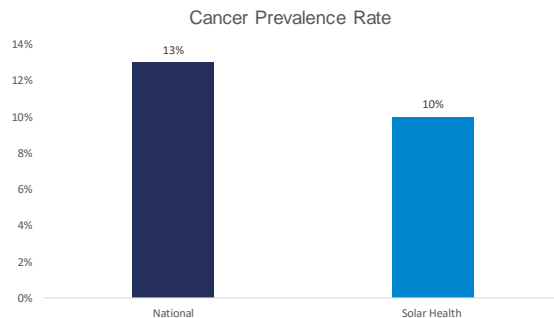
- Trends and Comparisons
 - Cancer prevalence is increasing over time for both national rates and Solar Health rates
 - Prevalence at Solar Health is consistently lower than the national rate
- Anomalies
 - Cancer rates at Solar Health in Year 4 increased substantially from the previous years

2



2

Diagnostic Analysis: Stratification



10% of Solar Health's 70,000 patients across two hospitals and three clinics have been diagnosed with breast cancer. This is a little bit lower than the national average and is within a standard range, so it doesn't cause much alarm to leadership or community members. However...

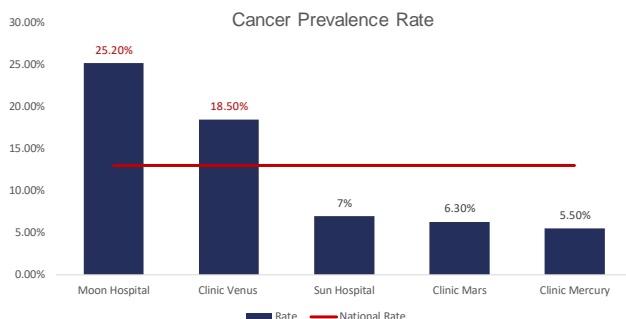
3



3



Diagnostic Analysis: Stratification



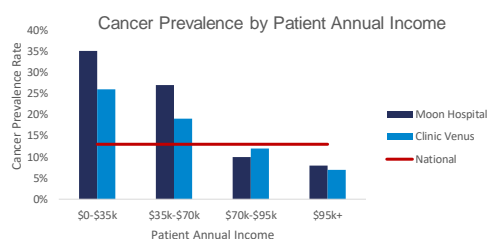
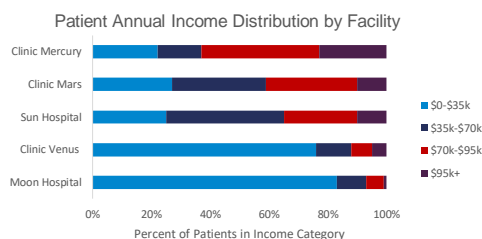
- Stratifying by facility, we can see that Moon Hospital and Clinic Venus have much higher rates of cancer prevalence that were masked by the other facilities' lower rates.
- What interactions could be happening that could cause these stark differences in rates?

4



4

Diagnostic Analysis: Identify Relationships



- When we stratify by the distribution of patient income at each facility, we can see that Clinic Venus and Moon Hospital have a much larger low-income patient population than the other sites.
- By stratifying even further at just Moon Hospital and Clinic Venus, we can see that cancer rates are much higher for low-income patients than the rates for patients with an annual income over \$70k.
- There seems to be a correlated relationship between patient income and cancer prevalence rates.

5



5



Summary

- Summary statistics help us understand the dataset's characteristics, size, and variables. The mean, median, mode, and range give a high-level overview of the data.
- Plot data over time to spot trends, patterns, and anomalies.
- Purposeful stratification compares outcomes across strata to uncover disparities or trends.

Stratis Health is a nonprofit organization that leads collaboration and innovation in health care quality and safety and serves as a trusted expert in facilitating improvement for people and communities.

This project is supported by the Health Resources and Services Administration (HRSA) of the U.S. Department of Health and Human Services (HHS) as part of an award totaling \$740,000 with 0% financed with non-governmental sources. The contents are those of the author(s) and do not necessarily represent the official view of, nor an endorsement, by HRSA, HHS or the U.S. Government. (June 2023)